

YETI - AN ECLIPSE PLUG-IN FOR TINYOS 2.1



[HTTP://TOS-IDE.ETHZ.CH](http://tos-ide.ethz.ch)

ETH
Eidgenössische Technische Hochschule Zürich
Swiss Federal Institute of Technology Zurich

Nicolas Burri, Roland Flury, Silvan Nellen, Benjamin Sigg,
Philipp Sommer, Roger Wattenhofer (ETH Zurich)



1. INTRODUCTION

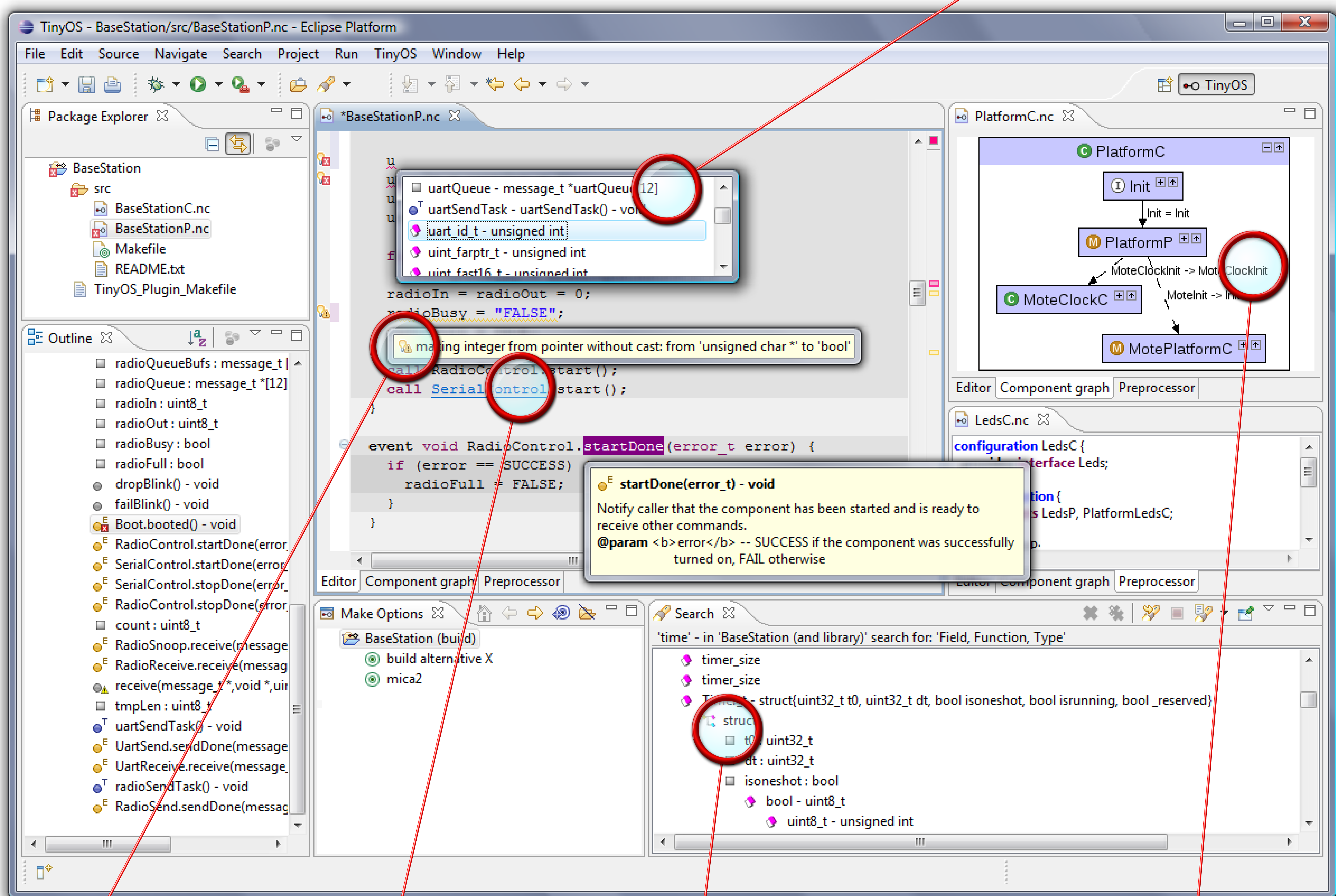
YETI is an Eclipse plug-in providing support for TinyOS development. YETI provides useful features like syntax highlighting, code completion and error detection.

2. BUILD

Build and flash sensor nodes.
- One click only
- Extensive set of options

3. CODE COMPLETION

Complete unfinished source code.
- Context sensitive
- Real-time



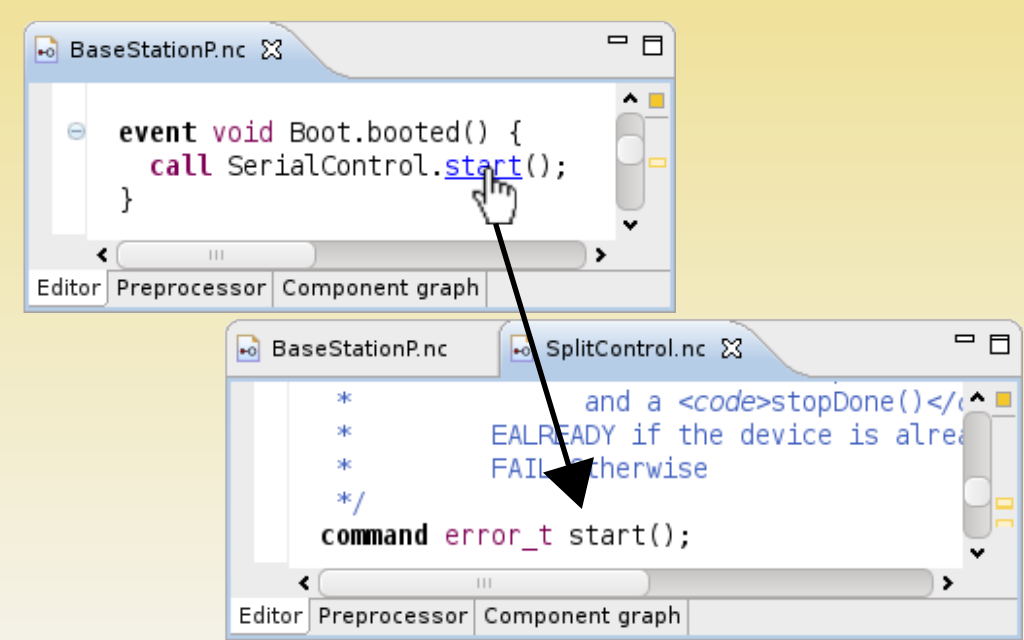
4. ERROR DETECTION

Real-time analysis of source code.

- Unsafe type casts
- Incorrect wiring
- Misspelled variables
- etc ...

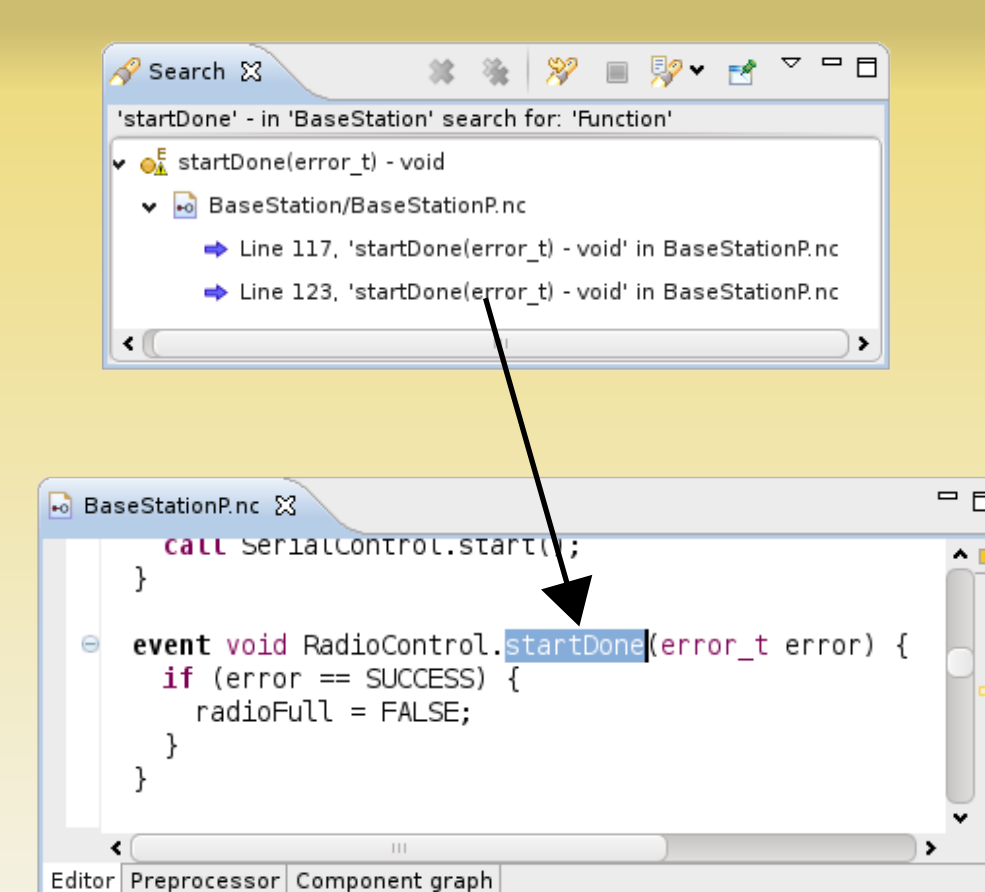
5. HYPERLINKS

Jump from reference to declaration.



6. SEARCH

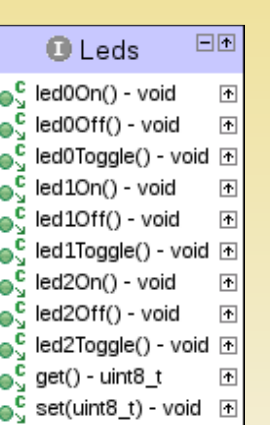
- Declarations
- References
- of
- Typedefs
- Macros
- Components



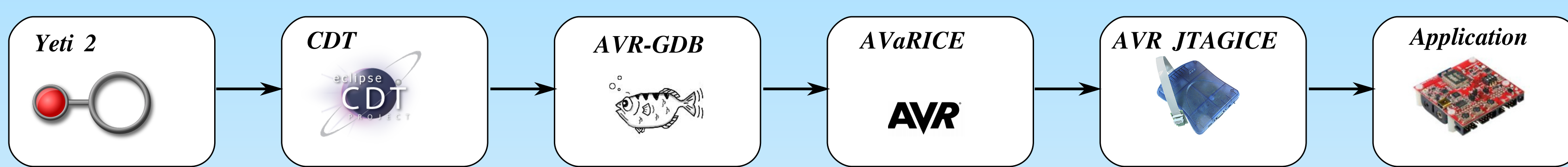
7. GRAPH

Wiring of interfaces, modules and configurations.

- Shows NesC-doc
- Hyperlinks to source code



8. DEBUGGING TINYOS APPLICATIONS



- Inspect fields of the running application.
- Runs the application on the sensor node.
- Through JTAG adapter
- AVR
- MSP430

9. PROPERTIES & MAKE OPTIONS

- Include paths
- Platform
- Additional sensors
- etc ...

- Adapts to current version of TinyOS tree.

